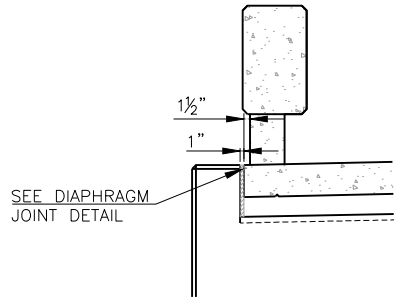


DECK SLAB SHOWN FOR INFORMATIONAL PURPOSES ONLY. DO NOT PLACE DECK SLAB CONCRETE UNTIL THE ABUTMENT DIAPHRAGM CONCRETE HAS ATTAINED A COMPRESSIVE STRENGTH OF 3000 P.S.I.

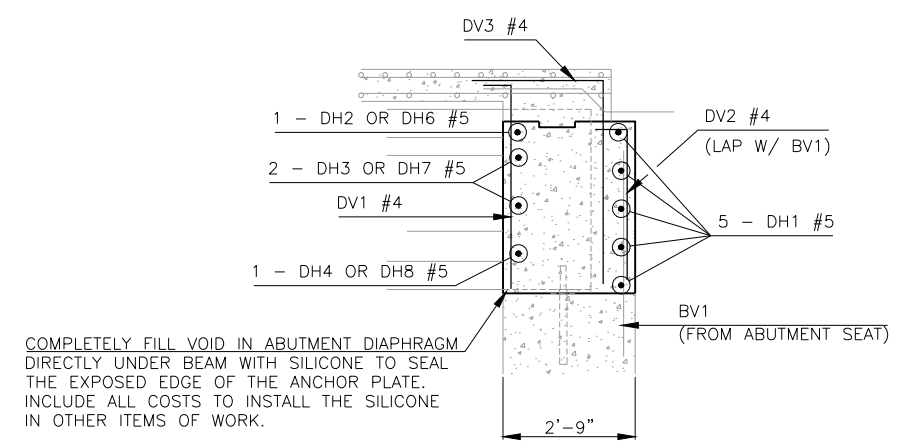


**ABUTMENT DIAPHRAGM BAR LIST**

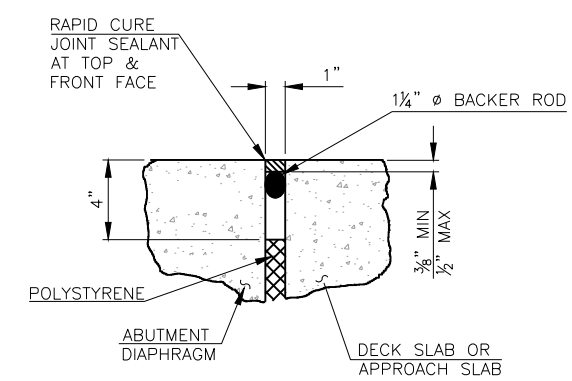
ONE SHOWN - TWO REQUIRED

EPOXY COATED REINFORCING

MARK	SIZE	NO.	FORM	LENGTH
DV1	#4	42	BNT.	4'-6"
DV2	#4	42	BNT.	3'-6"
DV3	#4	43	BNT.	6'-0"
DV4	#4	4	STR.	4'-5"
DV5	#4	6	BNT.	9'-4"
DH1	#5	5	BNT.	45'-8"
DH2	#5	4	STR.	7'-2"
DH3	#5	8	STR.	7'-11"
DH4	#5	4	STR.	6'-8"
DH5	#5	4	STR.	4'-6"
DH6	#5	2	STR.	3'-2"
DH7	#5	4	STR.	3'-6"
DH8	#5	2	STR.	2'-11"
DH9	#5	2	STR.	1'-8"
WT5	#4	14	STR.	5'-9"
WT6	#7	14	BNT.	10'-5"
WT7	#7	6	BNT.	19'-2"

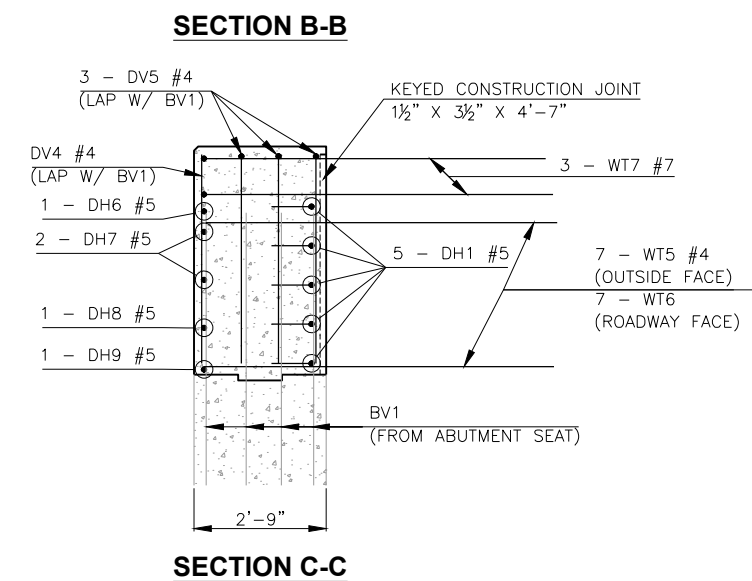
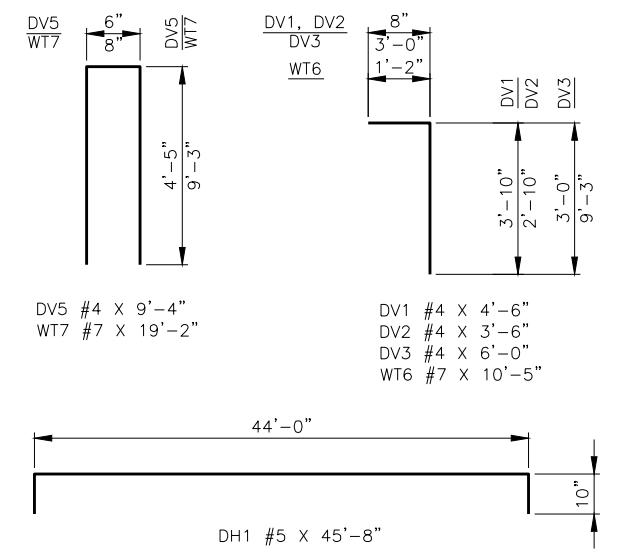


COMPLETELY FILL VOID IN ABUTMENT DIAPHRAGM DIRECTLY UNDER BEAM WITH SILICONE TO SEAL THE EXPOSED EDGE OF THE ANCHOR PLATE. INCLUDE ALL COSTS TO INSTALL THE SILICONE IN OTHER ITEMS OF WORK.



**DIAPHRAGM JOINT DETAIL**

NOTE: INCLUDE ALL COSTS TO INSTALL THE DIAPHRAGM JOINT IN OTHER ITEMS OF WORK.



DESIGN	J.W.H.	SH34 OVER S. PERSIMMON CREEK	WOODWARD COUNTY
DRAWN	R.A.P.	BRIDGE A	
CHECKED	J.W.H.	<b>ABUTMENT DIAPHRAGM DETAILS (SHEET 2 OF 2)</b>	
APPROV.	T.A.C.		
SQUAD	CEC		
		JOB PIECE NO. 28825(04)	SHEET NO. 39